

*Introducing Andover Fabrics new collection:
Jitterbug fabrics by Cosmo Cricket*

Soda Shop



Jitterbug fabrics by Cosmo Cricket
Quilt designed, made, and
machine quilted by Cheri House
Finished size: 49-1/2" x 61-1/2"



makower uk[®]

1384 Broadway · New York, NY 10018 · (800) 223-5678

www.andoverfabrics.com

- Free Pattern Download Available -

Soda Shop

Featuring the *Jitterbug* collection from *Andover Fabrics*, designed by *Cosmo Cricket*
 Quilt designed, made, and machine quilted by *Cherri House*

Fabric Requirements & Cutting Directions

Quilt finishes approx. 49-1/2" x 61-1/2"

3633-E 1/2 yard Pink Flower Print

Cut (2)* 4-1/2" x 8-1/2" rectangles

Cut (10) 2" x 4-1/2" strips

Cut (10) 2-1/2" x 4-1/2" rectangles

3635-L 1/2 yard Beige Large Dot

Cut (2) 1-1/2" x 4-1/2" strips

Cut (10) 4-1/2" x 8-1/2" rectangles

3633-B 1/2 yard Blue Flower Print

Cut (8)* 4-1/2" x 8-1/2" rectangles

Cut (6) 2" x 4-1/2" strips

Cut (6) 2-1/2" x 4-1/2" rectangles

Cut (1) 1-1/2" x 4-1/2" strips

1867-O4, 1867-NW, and 1867-G 1/8 yard each

Pale pink, beige, and dark green dimple prints

Cut (1) 1-1/2" x 4-1/2" strip each

3633-T 1/2 yard Green Flower Print

Cut (7)* 4-1/2" x 8-1/2" rectangles

Cut (6) 2" x 4-1/2" strips

Cut (6) 2-1/2" x 4-1/2" rectangles

3638-E 3/4 yard Beige/Green Narrow Stripe (Inner Border)

Cut (2)* 2" x 50" strips, pieced from 3 width of fabric strips

Cut (2)* 2" x 64" strips, pieced from 4 width of fabric strips

Cut (2) 1-1/2" x 4-1/2" strips, cut on crosswise grain

Cut (1) 1-1/2" x 4-1/2" strips, cut on lengthwise grain

Cut (2) 2" x 4-1/2" strips, cut on crosswise grain

Cut (2) 2-1/2" x 4-1/2" strips, cut on lengthwise grain

Cut (2) 2" x 4-1/2" strips, cut on lengthwise grain

Cut (2) 2-1/2" x 4-1/2" strips, cut on crosswise grain

3638-N 3/8 yard Brown/Blue Narrow Stripe**

Cut (6) 2" x 4-1/2" strips, cut on lengthwise grain

Cut (6) 2-1/2" x 4-1/2" strips, cut on crosswise grain

Cut (1) 1-1/2" x 4-1/2" strip, cut on crosswise grain

3637-E 1/8 yard Pink/Brown Small Dot

Cut (2) 2" x 4-1/2" strips

Cut (2) 2-1/2" x 4-1/2" strips

3637-R 1/8 yard Beige/Red Small Dot

Cut (2) 2" x 4-1/2" strips

Cut (2) 2-1/2" x 4-1/2" strips

1867-R1 and 1867-B6 1/8 yard each Red Dimple and Light Blue Dimple Prints

Cut (2) 1-1/2" x 4-1/2" strips each

3636-R 3/8 yard Red/Blue/Pink Wide Diagonal Stripe

Cut (4)* 4-1/2" x 8-1/2" rectangles, cut on lengthwise grain

Cut (4) 4-1/2" x 8-1/2" rectangles, cut on crosswise grain

3635-R 3/8 yard Red Large Dot Print

Cut (8) 4-1/2" x 8-1/2" rectangles

Cut (1) 1-1/2" x 4-1/2" strip

3635-N 1/2 yard Brown Large Dot Print

Cut (9) 4-1/2" x 8-1/2" rectangles

Cut (1) 1-1/2" x 4-1/2" strip

3634-E 2 yards Pink Border Stripe

Cut (2)* 1-1/2" x 66" strips, fussy-cut on lengthwise grain, see Cutting Diagram

Cut (2)* 1-1/2" x 52" strips, fussy-cut on lengthwise grain, see Cutting Diagram

Cut (2) 4-1/2" x 8-1/2" rectangles, cut on crosswise grain

1867-N4 1/8 yard Dark Brown Dimple Print

Cut (3) 1-1/2" x 4-1/2" strips

3636-T 3/8 yard Green/Brown/Pink Wide Diagonal Stripe

Cut (2) 4-1/2" x 8-1/2" rectangles, cut on lengthwise grain

Cut (2) 4-1/2" x 8-1/2" rectangles, cut on crosswise grain

*Cut first.

**Additional yardage needed for binding (see below).

3638-N 5/8 yard Brown/Blue Narrow Stripe (Binding)

Cut (6) 2-1/2" x width of fabric strips

1867-NW 3-1/2 yards Beige Dimple Print (Backing)

Cut and piece to fit quilt top with 4" overlap.

Piecing the Blocks

Note: Piece blocks using any 1-1/2" x 4-1/2" strip in the center of any color block.

1. Referring to Diagram I, stitch two pink flower 2" x 4-1/2" strips to sides of 1-1/2" x 4-1/2" strip. Sew pink flower 2-1/2" x 4-1/2" strips to top/bottom to make Pieced Rectangle Block. Make 5 total. In same manner, make remaining blocks in colors and quantities shown.

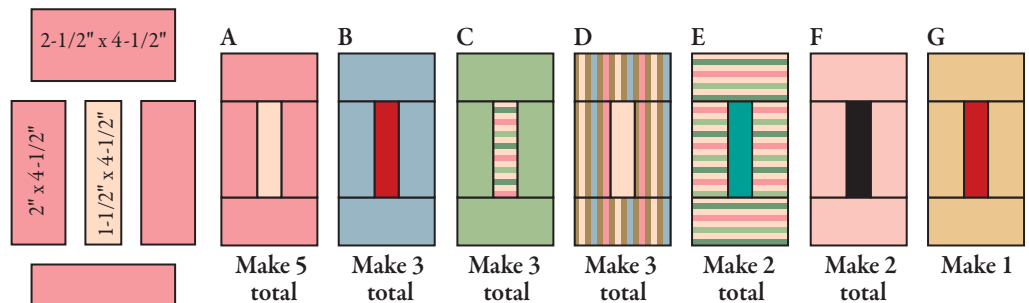


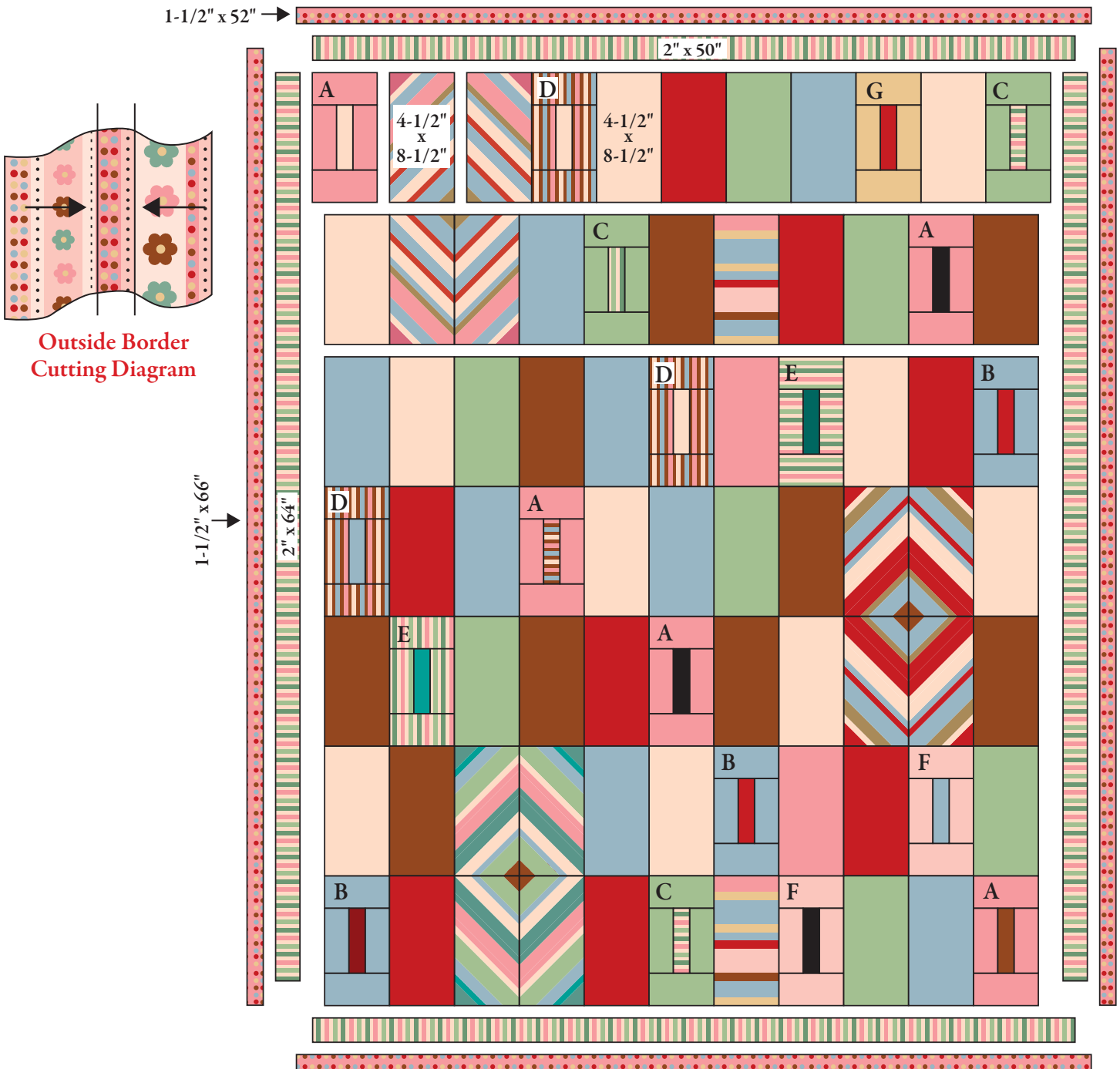
Diagram I

Assembling the Quilt

- Looking closely at photo and quilt diagram, arrange and stitch 7 rows of 11 blocks/rectangles each. Be sure to orient diagonally striped rectangles correctly so as to form large diamond shapes. Sew rows together.
- Stitch beige/green narrow stripe 2" x 50" strips to top/bottom; trim even with sides. Stitch beige/green narrow stripe 64" strips to sides; trim even with top/bottom.
- Sew fussy-cut pink border stripe 52" strips to top/bottom, being sure to put paler pink stripe to the outside. In same manner, stitch remaining border stripe strips to sides; trim even with top/bottom.

Finishing the Quilt

- Layer the quilt top with batting and 1867-NW beige dimple print. Quilt as desired. Bind with 3638-N brown/blue narrow stripe to finish the quilt.



Quilt Diagram

1384 Broadway
New York, NY 10018
(800) 223-5678
www.andoverfabrics.com

Jitterbug

by Cosmo Cricket

Andover
Fabrics™
makower uk®



3635-R



3635-N



3635-L



3633-E



3633-T



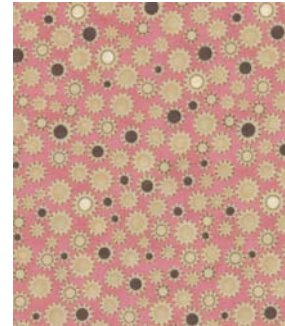
3633-B



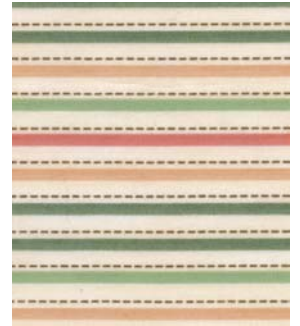
3634-E



3636-T



3637-E



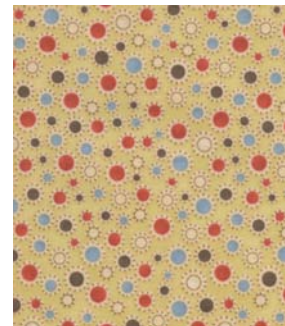
3638-E



3634-B



3636-R



3637-R



3638-N

Fabrics shown are 40% of actual size.

Free Pattern Download Available at www.andoverfabrics.com