

*Introducing Andover Fabrics new collection:
Halfway Cafe fabrics by Cosmo Cricket*

Halfway Cafe



Halfway Cafe fabrics designed
by Cosmo Cricket
Quilt designed, made, and
quilted by Cheri House
Finished size: 57-1/2" x 68-1/2"



makower uk[®]

1384 Broadway • New York, NY 10018 • (800) 223-5678

www.andoverfabrics.com

- Free Pattern Download Available -

Halfway Cafe

Introducing the Halfway Cafe collection, designed by Cosmo Cricket for Andover Fabrics
Quilt designed, made, and quilted by Cherri House. Quilt finishes approximately: 57 1/2" x 68 1/2"

Planning

Notice that each fabric listing indicates the block(s) in which that fabric is used. Please refer to photo, diagrams, and this listing when piecing blocks.

Fabric Requirements & Cutting Directions

3718-B 5/8 yard Cream/blue floral (Blocks A, C, D, F, I, N, O, and T)

Cut (7) 5 3/8" squares
Cut (2) 2" x 24" strips
Cut (1) 2 3/4" x 26" strip
Cut (4) 5" squares
Cut (4) 2 3/4" squares

3720-RN 3/8 yard Red/cream print (Blocks A, F, and O)

Cut (4) 5 3/8" squares
Cut (1) 2 3/4" x 26" strip
Cut (4) 2 3/4" squares

3716-N 1/2 yard Brown/blue geometric (Blocks B, D, N, P, and T)

Cut (5) 5 3/8" squares
Cut (8) 2 3/4" squares
Cut (4) 2 3/4" x 5" rectangles

3717-LV 3/8 yard Green/blue stripe (Blocks B and M)

Cut (2) 5 3/8" squares on bias grain
Cut (4) 5" squares on bias grain

3720-B 1/2 yard Turquoise print (Blocks C, G, P, and S)

Cut (1) 2" x 24" strip
Cut (4) 2 3/4" x 5" rectangles
Cut (4) 2 3/4" squares
Cut (6) 5" squares

3715-B 3/8 yard Blue with cream stars (Block E)

Cut (4) 5" squares, centered on star

3716-B 3/8 yard Turquoise/red geometric (Blocks J, Q, and S)

Cut (4) 2 3/4" squares
Cut (4) 2 3/4" x 5" rectangles
Cut (6) 5" squares

3718-G 1/4 yard Green/blue floral (Blocks H and I)
Cut (6) 5" squares

3719-B 3/8 yard Tan/blue stripe (Block K)
Cut (4) 5" squares on bias grain

3715-C 3/8 yard Light blue with red stars (Block L)
Cut (4) 5" squares, centered on star

3715-R 2 yards Red with turquoise stars
(Block R and outer border)

*Cut (4) 4 1/2" x 66" strips on lengthwise grain,
centered on stars

Cut (4) 5" squares, centered on star

1867 N1 1 7/8 yards Dark brown dimple
(all blocks and inner border)

*Cut (2) 1 1/2" x 60" strips on lengthwise grain

*Cut (2) 1 1/2" x 50" strips on lengthwise grain

*Cut (4) 1 1/2" x 43 1/2" strips on lengthwise grain

Cut (40) 1 1/2" x 5" strips

Cut (20) 1 1/2" x 10 1/2" strips

3719-RN 5/8 yard Tan/red stripe (middle border)

Cut (2) 2 1/2" x 62" strips, pieced from 4 width of
fabric strips

Cut (2) 2 1/2" x 54" strips, pieced from 3 width of fabric
strips

*Cut first.

1867 NL 3 7/8 yards Light brown dimple (Backing)

Cut and piece widthwise to fit quilt top, with 4" overlap on
all sides.

3717-B 5/8 yard Blue/red narrow stripe (Binding)

Cut (7) 2 1/2" x width of fabric strips

Halfway Cafe

Block Assembly

1. Referring to Diagram A, draw diagonal line on wrong side of cream/blue floral $5\frac{3}{8}$ " square. Place marked square on red/cream print $5\frac{3}{8}$ " square, right sides together. Sew $\frac{1}{4}$ " seam on either side of drawn line. Cut apart on marked line and press open to make pieced squares. Make 8. In same manner, make remaining pieced squares in fabrics and quantities shown.

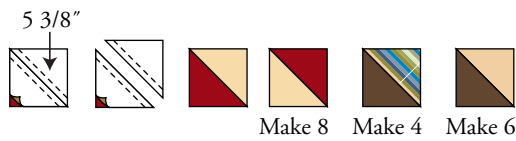


Diagram A

2. Stitch 2 cream/blue 2 " x 24 " strips to sides of turquoise print 2 " x 24 " strip (Diagram B) to make strip set. Cut 4 segments 5 " wide from strip set to make strip squares.

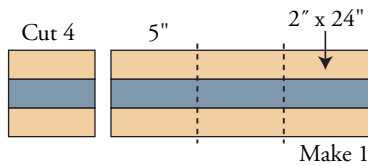


Diagram B

3. Sew red/cream print and cream/blue floral $2\frac{3}{4}$ " x 26 " strips together (Diagram C) to make strip set. Cut 8 segments $2\frac{3}{4}$ " wide from strip set. Stitch two segments together to make four-patch. Make 4.

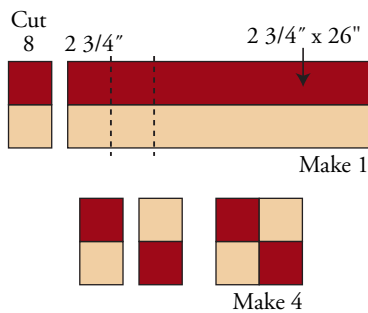


Diagram C

4. Referring to Diagram D, sew brown/blue geometric $2\frac{3}{4}$ " x 5 " rectangle, brown/blue $2\frac{3}{4}$ " square, and cream/blue floral $2\frac{3}{4}$ " square together to make corner square. Make 4. Make remaining corner squares in fabrics and quantities shown.

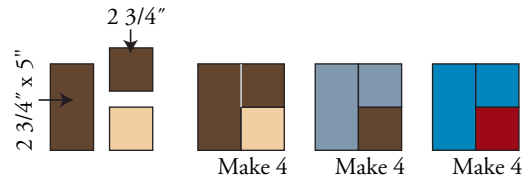


Diagram D

5. Referring to Diagram E and Planning, piece Blocks A through T using units made in Steps 1-4, all 5 " squares, and dark brown duple $1\frac{1}{2}$ " x 5 " and $1\frac{1}{2}$ " x $10\frac{1}{2}$ " strips.

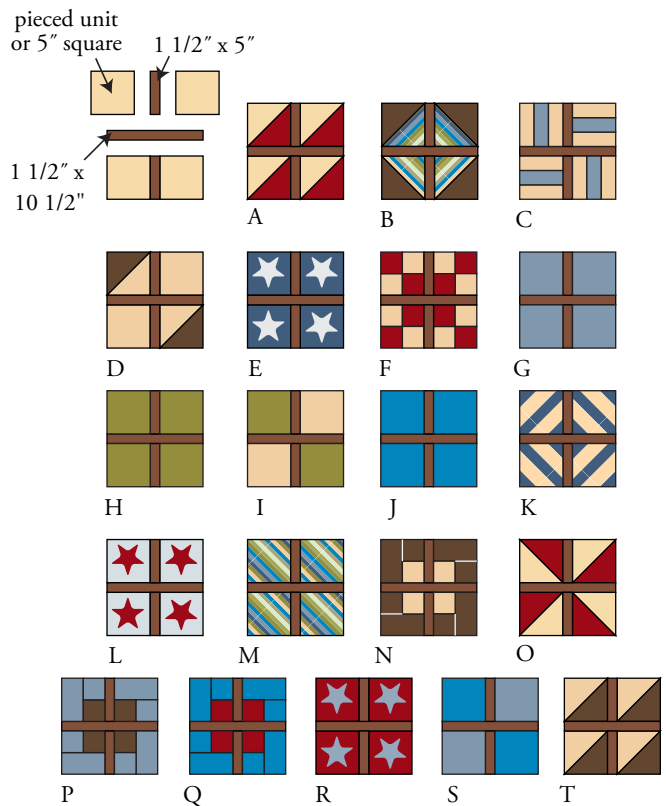


Diagram E

Halfway Cafe

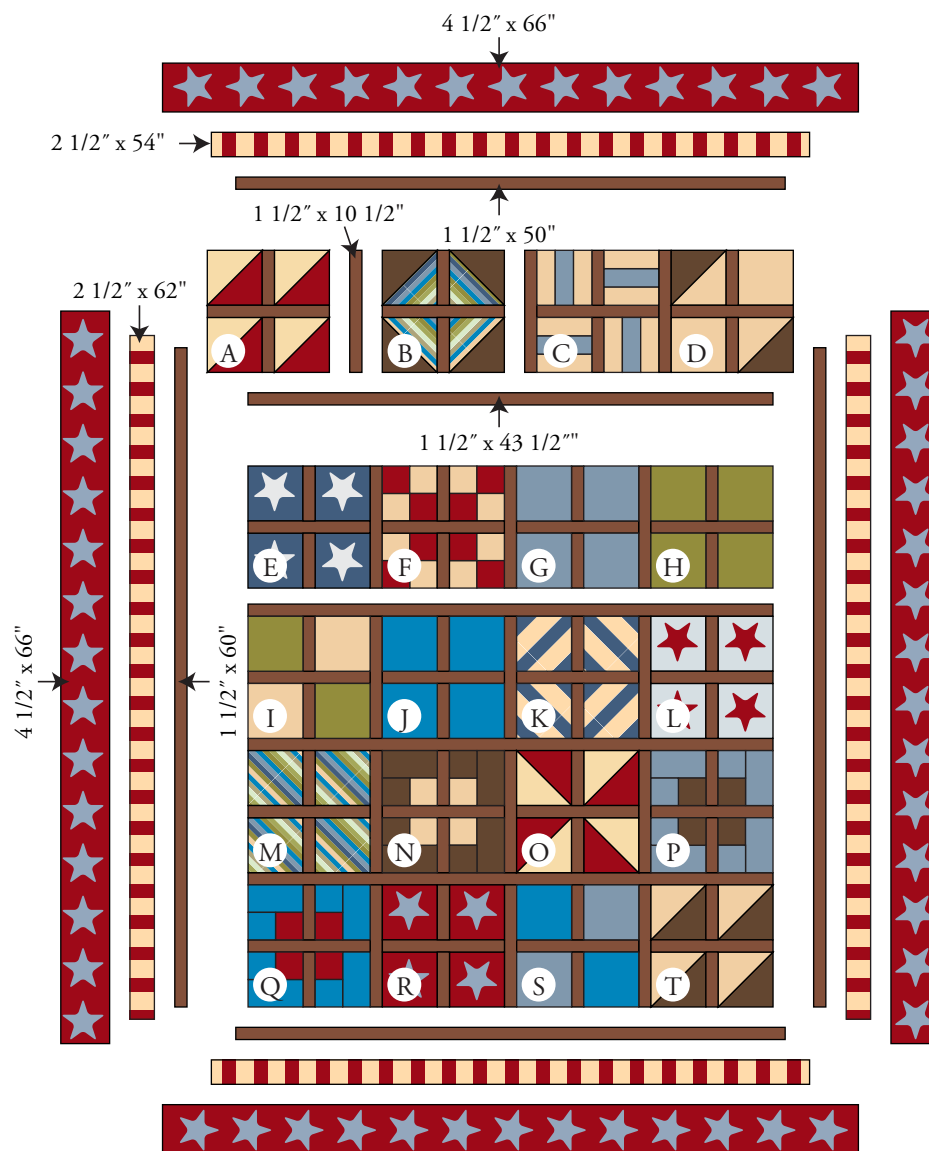
Assembling the Quilt

- Referring closely to Quilt Diagram and photo, arrange blocks to match quilt. Feel free to re-arrange blocks if you wish. Stitch 5 block rows of 4 blocks and 3 dark brown duple $1\frac{1}{2}'' \times 10\frac{1}{2}''$ strips each.
- Sew block rows and dark brown $1\frac{1}{2}'' \times 43\frac{1}{2}''$ strips together, alternating, to make quilt center.
- Stitch dark brown 60'' strips to sides of quilt center; trim even with top and bottom. Sew dark brown 50'' strips to top and bottom; trim even with sides.
- Sew tan/red stripe 62'' strips to sides; trim even with top/bottom. Sew tan/red stripe 54'' strips to top/bottom; trim even with sides.

- Stitch red with turquoise stars 66'' strips to sides; trim even. Sew remaining red/turquoise stars strips to top/bottom; trim even.

Finishing the Quilt

- Layer quilt with batting and 1867 NL light brown duple backing. Quilt as desired. Bind quilt with 3717-B blue/red narrow stripe to finish the quilt.



Quilt Diagram

1384 Broadway
New York, NY 10018
(800) 223-5678
www.andoverfabrics.com

Halfway Café

by COSMO CRICKET

Andover
Fabrics™
makower uk®



3715-R



3715-C



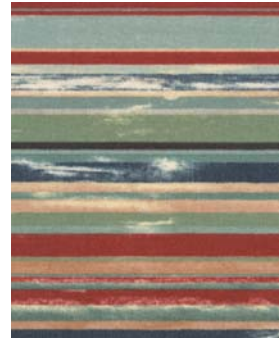
3719-RN



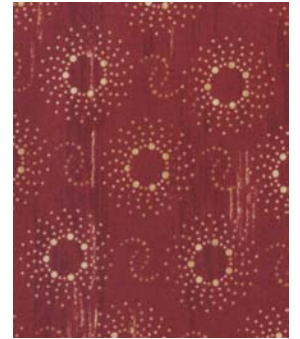
3718-B



3716-B



3717-B



3720-RN



3715-B



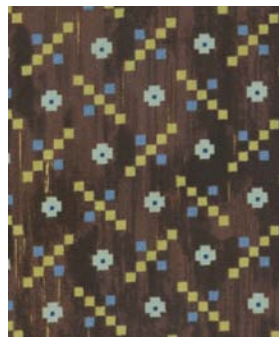
3719-B



3719-N



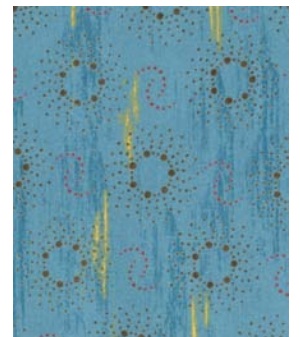
3718-G



3716-N



3717-LV



3720-B

Fabrics shown are 40% of actual size.

Free Pattern Download Available at www.andoverfabrics.com