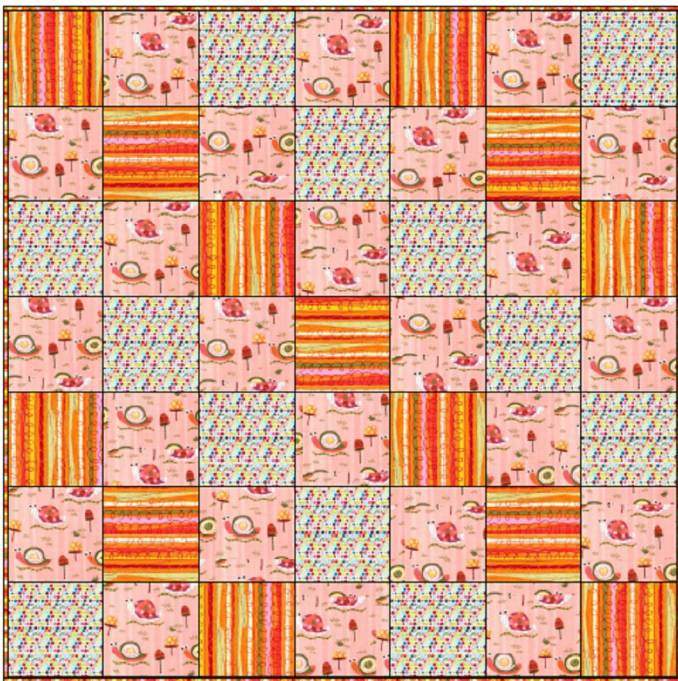


Girl Power

©ELIZABETH HOUSE 2008

What is Girl Power? Little girl dreams, fueled by a world of possibilities, nurtured with love and support



Quilt Size: 39 x 39 5 1/2" block

Fabric Requirements:

DOTS 1 1/2 YDS (quilt and backing)

SNAILS 3/4 YD

STRIPE 1 YD (quilt and binding)

Cutting Instructions:

DOTS 2 6" strips (6" x WOF)

SNAILS 3 6" strips (6" x WOF)

STRIPE 2 6" strips (6" x WOF)

Cut the stripe fabric cross grain to create a striped binding

Blocks Needed: Subcut strips into 6" blocks

12 DOTS

24 SNAIL

13 STRIPES

Layout blocks according to quilt diagram.

Pressing Instructions:

Press all seams toward the snail blocks, this way all the seams in each row will butt up against the next row. Pin at intersections, stitch, and press. Continue adding rows to complete the top.

Finishing:

To quilt, layer and baste the quilt top, batting, and backing. Quilt as desired, or tie.

Do you need a bigger quilt...just increase the size of the blocks!

- 9" block would yield a 63" x 63" quilt
- 12" block would yield a 84" x 84" quilt
- Do you want to add a little challenge? Switch out a diagonal row of plain blocks with four patch units



The skies the limit with Girl Power!

